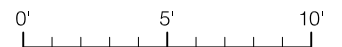
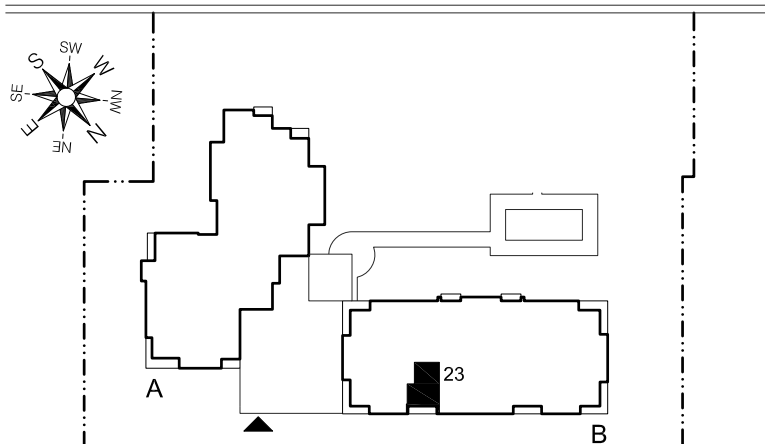


ALCOVE
ALCOVE
(9'-10" x 13'-6")

VIVOIR
LIVING ROOM
(10'-0" x 16'-6")



RUE DE LA MONTAGNE - MOUNTAIN STREET



RUE DRUMMOND - DRUMMOND STREET

STUDIO 493 PC / SQ FT

TOUTES LES DIMENSIONS SONT APPROXIMATIVES / ALL DIMENSIONS ARE APPROXIMATE



Gestion Immobilier Deux Ltée. / Immobilier Holdings Two Ltd.